

The background of the image is a dark, moody green, featuring large, overlapping leaves that create a sense of depth and texture. The leaves are silhouetted against a slightly lighter green background, with some highlights catching the light. The overall aesthetic is natural and serene.

# SCENIC APARTMENTS

A romantic scene in a modern apartment. A man and a woman stand on a balcony, embracing and looking out at a sunset over a city and water. The room is dimly lit, with a sofa, a coffee table with wine and candles, and sheer curtains framing the view.

WAKE UP WITH A VIEW  
OF LIMITLESS POSSIBILITIES

Exclusively for luxury apartments



# LUXURY

## LUXURY CONDOMINIUM MANAGED BY A 5\* HOTEL

Construction completion in in January 2028

	A2	A3	A4	A5	Price, THB*
<b>Number of apartments</b>	46	36	5	6	
<b>1-BR: from 100.7 m<sup>2</sup></b>	16	6			<b>FROM 22.0 MLN</b>
<b>2-BR: from 165.3 m<sup>2</sup></b>	14	11			<b>FROM 37.3 MLN</b>
<b>3-BR: from 196.1 m<sup>2</sup></b>	12	10			<b>FROM 43.4 MLN</b>
<b>4-BR: from 394.4 m<sup>2</sup></b>	4	9			<b>FROM 87.8 MLN</b>
<b>4-BR PENTHOUSE: from 519.6 m<sup>2</sup></b>			5		<b>FROM 123.5 MLN</b>
<b>5-BR PENTHOUSE: from 649.1 m<sup>2</sup></b>				6	

[PRICE LIST](#)

[INTERIORS](#)

[LAYOUTS](#)

[VIEW](#)

## HIGH CEILINGS UP TO 3.2 M

Ceiling heights are higher than similar projects in Phuket

## LIGHTING

Using designer lamps offers a range of lighting choices

## ERGONOMIC BUILT-IN FURNITURE

Efficient space utilization and extended lifespan  
due to custom manufacturing

## PREMIUM FURNITURE

from manufacturers known for high-quality supplies for 5\* hotels



A modern bedroom with a bed, desk, and chair. The room features a large bed with white linens and a beige throw blanket. A desk with a purple chair and a lamp is visible in the background. The walls are dark wood, and there are decorative light fixtures.

## ENERGY-SAVING SINGLE-CHAMBER GLASS UNITS

Low-E Glass with protection from IR and UV radiation

## SMART HOME

Allows you to remotely control your comfort and customize scenarios for various occasions

## ENVIRONMENTALLY-FRIENDLY WEAR-RESISTANT FLOORING

A modern bathroom with a freestanding bath and toilet. The room features a dark wood vanity with a marble countertop and a freestanding white toilet. The walls are dark wood, and there are decorative light fixtures.

## CENTRAL HOT WATER SUPPLY

A central inverter water heater system that efficiently provides hot water to the entire complex

## THOUGHTFULLY-DESIGNED GLAZING

Natural light even in private spaces

## FREESTANDING BATH

## WATER-SAVING PLUMBING FIXTURES

# ECOLOGICAL AND HIGH-QUALITY FINISHING MATERIALS



## FLOOR:

Engineered oak flooring  
by Engineered Floor  
Floorteen

Terrazzo flooring with  
natural stone aggregate  
(for kitchen area)

Large-format ceramic  
tile (for bathroom area)



## WALLS:

Benjamin Moore high-quality  
paint

Marble shower wall panel:  
Arabescato Orobico



## DOORS AND WINDOWS:

Double-glazed units in aluminum  
frames: HS6 Low-e on low-iron / 12Ar /  
FL6 low-iron + 1.52 PVB + FL6 low-iron

Invisible doors finished with natural  
oak veneer

# CUSTOM-MADE FURNITURE



## KITCHEN:

Classic Beige Travertine  
kitchen island made  
of natural stone

Silver Travertine kitchen  
backsplash made of natural  
stone

Oak-veneered cabinet  
façades



## BATHROOM:

Arabescato Orobico  
marble sink

## FURNITURE:

Headboard is finished  
with teak veneer

Built-in furniture with  
natural teak veneer façades



The background of the image is a dark, muted green color. It is filled with large, overlapping leaves that have a slightly glossy texture. The leaves are arranged in a way that creates a sense of depth and movement, with some leaves in the foreground and others receding into the background. The lighting is soft, highlighting the veins of the leaves and their natural curves.

# LAYOUT SOLUTIONS

FOR LIVING AND LEISURE

1 BEDROOM

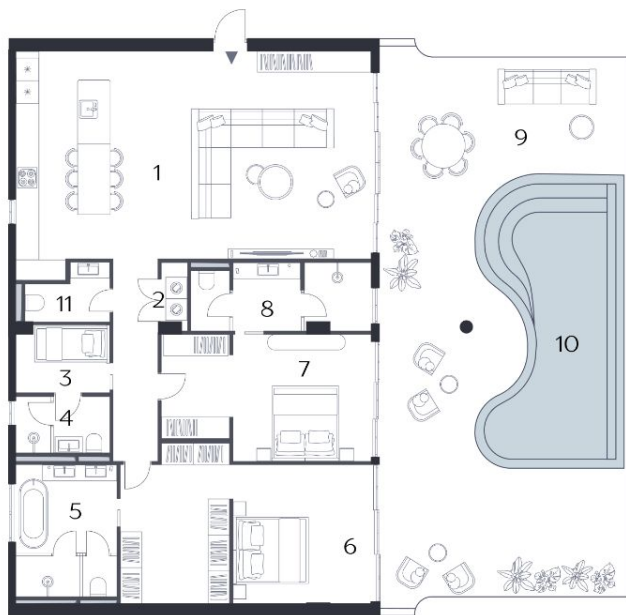
FROM 100.7 M<sup>2</sup>

LUXURY



- 1. Kitchen and living area
- 2. Bedroom
- 3. Bathroom
- 4. Powder Room
- 5. Terrace
- 6. Jacuzzi
- 7. Laundry

## 2 BEDROOM FROM 165.7 M<sup>2</sup>



- |                            |                   |
|----------------------------|-------------------|
| 1. Kitchen and living area | 7. Bedroom        |
| 2. Laundry room            | 8. Bathroom       |
| 3. Maid's bedroom          | 9. Terrace        |
| 4. Bathroom                | 10. Swimming pool |
| 5. Bathroom                | 11. WC            |
| 6. Bedroom                 |                   |



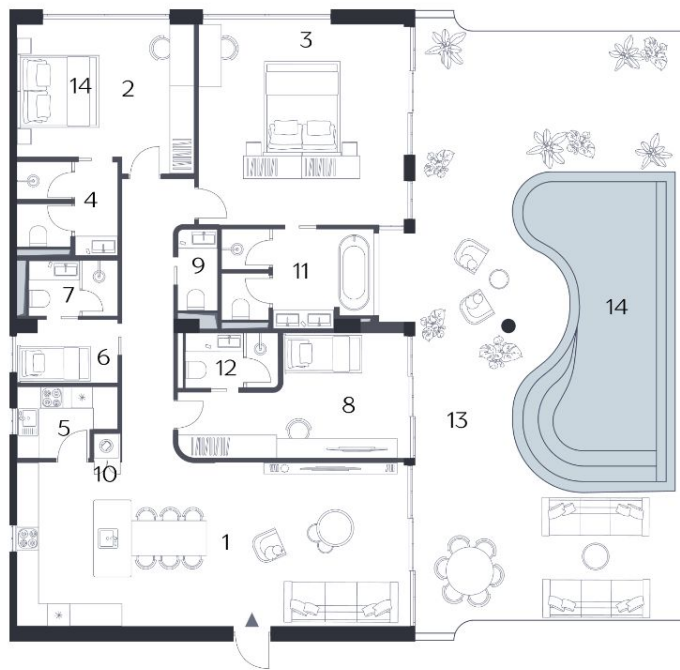
LUXURY

3 BEDROOM



FROM 243.9 M<sup>2</sup>

LUXURY



- |                            |                    |                   |
|----------------------------|--------------------|-------------------|
| 1. Kitchen and living area | 6. Maid's bedroom  | 11. Bathroom      |
| 2. Bedroom                 | 7. Maid's bathroom | 12. Bathroom      |
| 3. Master bedroom          | 8. Bedroom         | 13. Terrace       |
| 4. Bathroom                | 9. WC              | 14. Swimming pool |
| 5. Dirty kitchen           | 10. Laundry room   |                   |



## 4 BEDROOM PENTHOUSE

FROM 519.6 M<sup>2</sup>

LUXURY



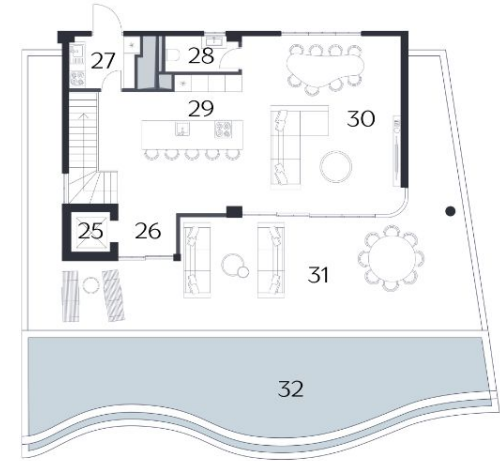
First floor

1. Hall
2. Lift
3. Maid's bathroom
4. Maid's bedroom
5. Study room
6. WC
7. Laundry room
8. Private garden
9. Sauna
10. Playroom / wine room
11. Terrace
12. WC



Second floor

13. Hall
14. Lift
15. Bathroom
16. Bedroom
17. Bedroom
18. Bathroom
19. Bathroom
20. Bedroom
21. Bathroom
22. Bedroom
23. Walk-in-closet
24. Terrace



Third floor

25. Lift
26. Hall
27. Dirty kitchen
28. WC
29. Kitchen
30. Living area
31. Terrace
32. Swimming pool

# 5 BEDROOM PENTHOUSE

FROM 649.1 M<sup>2</sup>

LUXURY



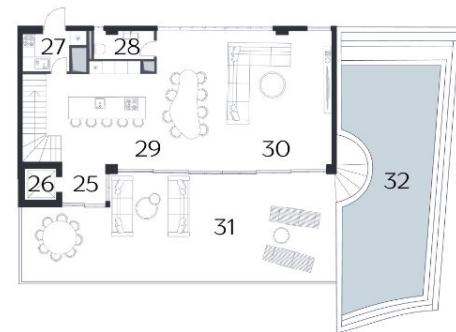
First floor

1. Hall
2. Lift
3. Maid's bedroom
4. Maid's bathroom
5. WC
6. Storage
7. Sauna
8. Private garden
9. Study room
10. Gym / billiard / home cinema



Second floor

11. Hall
12. Lift
13. Bedroom
14. Bathroom
15. WC
16. Bedroom
17. Bathroom
18. Bedroom
19. Bathroom
20. Bedroom
21. Bathroom
22. Bathroom
23. Bedroom
24. Terrace



Third floor

25. Hall
26. Lift
27. Dirty kitchen
28. WC
29. Kitchen
30. Living area
31. Terrace
32. Swimming pool

# A MAGICAL PLACE FOR THE REAL YOU



All visual materials featured in this presentation are for promotional purposes only. They are conceptual in nature, represent design intentions, and may differ from the final product. The visuals are subject to change without prior notice. The material in this album is provided solely for informational and advertising purposes and does not constitute a public offer. It is intended for an initial overview of the real estate property.